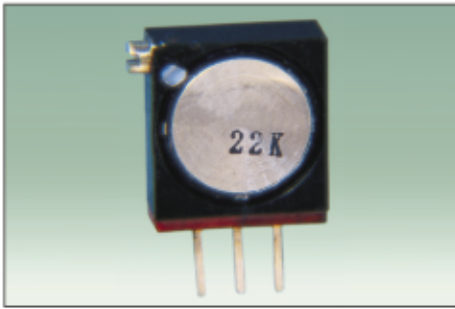


- Multiturn/ Cermet / Industrial
- Top and side adjust types

## CE13MT Series Square Trimming potentiometer



### Electrical Characteristics

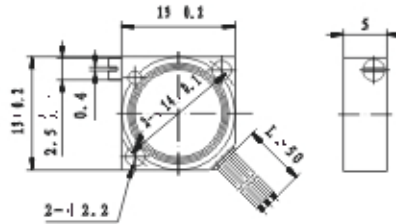
- Standard Resistance Range  
..... 50 to 5 megohms  
(see standard resistance table)
- Resistance Tolerance  
.....  $\pm 10\%$  std.  
(tighter tolerance available)
- Absolute Minimum Resistance  
..... 1% or 2 ohms max.  
(whichever is greater)
- Contact Resistance Variation  
..... 4% or 4 ohms max.  
(whichever is greater)
- Insulation Resistance  
..... 500 Vdc, 1,000 megohms min.
- Dielectric Strength  
..... 101.3kPa 600 Vac 8.5 kPa 350 Vac
- Adjustment Angle  
.....  $32 \pm 3$  turns

### Environmental Characteristics

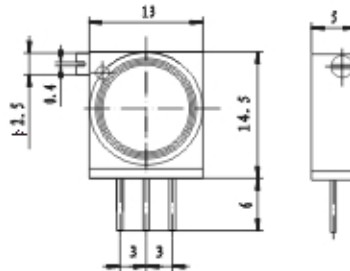
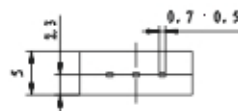
- Power Rating (150 volts max.)  
..... 0.5 watt (70°C), 0 watt (125°C)
- Temperature Range  
..... -55°C to +125°C
- Temperature Coefficient  
.....  $\pm 100$  ppm/°C
- Vibration  
..... 98 m/s<sup>2</sup>  
(2%  $\Delta$  TR; 3%  $\Delta$  VR)
- Shock  
..... 390 m/s<sup>2</sup>  
(2%  $\Delta$  TR; 2%  $\Delta$  VR)
- Load Life  
..... 1,000 hours 0.5 watt @ 85°C  
(5%  $\Delta$  TR; 8% or 8 ohms,  
Whichever is greater, CRV)
- Rotational Life  
..... 200 cycles  
(5%  $\Delta$  TR; 8% or 8 ohms,  
Whichever is greater, CRV)

### Physical Characteristics

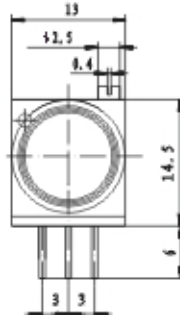
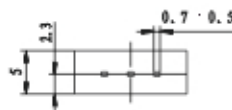
- Mechanical Angle  
.....  $40 \pm 3$  turns
- Torque  
..... 20 mN • m max.



CE13MT-1

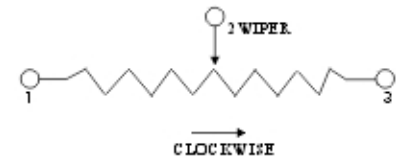
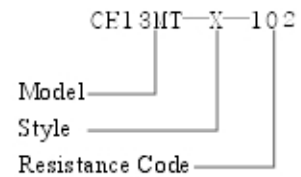


CE13MT-X



CE13MT-W

### How to order



### Standard Resistance Table

Resistance (Ohms)	Resistance Code
50	500
100	101
200	201
500	501
1,000	102
2,000	202
5,000	502
10,000	103
20,000	203
25,000	253
50,000	503
100,000	104
200,000	204
250,000	254
500,000	504
1,000,000	105
2,000,000	205
5,000,000	505

Special resistance available  
TCR in shaded areas  $\leq \pm 250$  ppm/°C

Detail Specification: Q/RYS08-2002