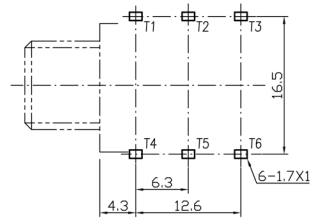
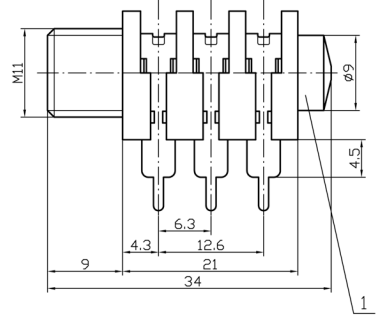
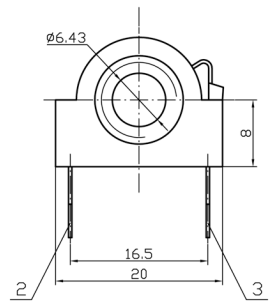
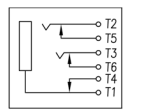


REV.	ECN. NO.	DESCRIPTION	APR.	DATE



CIRCUIT DIAGRAM



- NOTE:
- ELECTRICAL CHARACTERISTICS:
    - 1-1. RATING: 50V DC, 1A
    - 1-2. CONTACT RESISTANCE: 30mΩ Max
    - 1-3. INSULATION RESISTANCE: 50MΩ Min(DC500V)
    - 1-4. WITHSTANDING VOLTAGE: AC500V(50Hz)1Min
  - MECHANICAL CHARACTERISTICS:
    - 2-1. TOTAL INSERTION: 35N Max
    - 2-2. WITHDRAWAL FORCE: 0.8N~35N
    - 2-3. DURABILITY: 5000 CYCLES
  - ENVIRONMENTAL:
    - OPERATING TEMPERATURE: -40°C~ +70°C
    - STORAGE TEMPERATURE: -40°C~ +70°C
  - PART MUST COMPLY EU ROHS SPECIFICATION.

RECOMMEND PCB LAYOUT  
(JACK BOTTOM VIEW)  
TOLERANCE: ±0.05mm  
RECOMMEND PCB THICKNESS: 1.6mm

RoHS Compliant

3	TIP CONTACT	3	PHOSPHOR BRONZE	CuSn
2	BREAK CONTACT	3	BRASS	CuSn
1	HOUSING	1	ABS	BLACK
NO.	DESCRIPTION	QTY	MATERIAL	PLATING & COLOR

DIMENSION IN mm				APR. Vegas 2014-08-01		TITLE. 6.35mm Phone Jack - Full Thread	
GENERAL TOLERANCES (UNLESS SPECIFIED)				CHK. ZSC 2014-08-01		PART NO. H363646F00	
.X ±0.38	.X' ±3.0'	DRA. CJQ 2014-08-01				SIZE. A4	SHEET 1/1
.XX ±0.20	.X' ±2.0'					SCALE. 2:1	REV. X1
.XXX ±0.10	.X' ±1.5'	CUSTOMER					