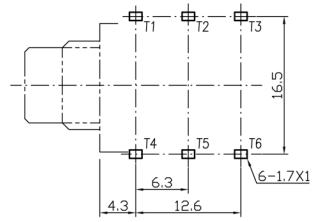
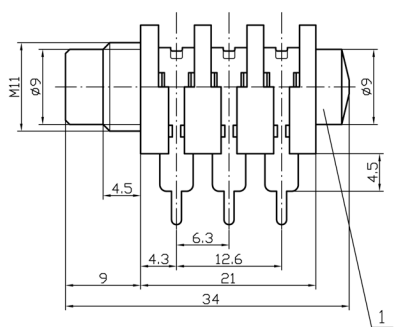
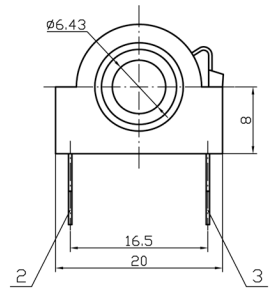
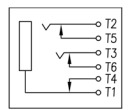


REV.	ECN. NO.	DESCRIPTION	APR.	DATE



CIRCUIT DIAGRAM



- NOTE:
- ELECTRICAL CHARACTERISTICS:
 - 1-1. RATING: 50V DC, 1A
 - 1-2. CONTACT RESISTANCE: 30mΩ Max
 - 1-3. INSULATION RESISTANCE: 50MΩ Min(DC500V)
 - 1-4. WITHSTANDING VOLTAGE: AC500V(50Hz)1Min
 - MECHANICAL CHARACTERISTICS:
 - 2-1. TOTAL INSERTION: 35N Max
 - 2-2. WITHDRAWAL FORCE: 0.8N~35N
 - 2-3. DURABILITY: 5000 CYCLES
 - ENVIRONMENTAL:
 - OPERATING TEMPERATURE: -40°C~ +70°C
 - STORAGE TEMPERATURE: -40°C~ +70°C
 - PART MUST COMPLY EU ROHS SPECIFICATION.

RECOMMEND PCB LAYOUT
(JACK BOTTOM VIEW)
TOLERANCE: ±0.05mm
RECOMMEND PCB THICKNESS: 1.6mm

RoHS Compliant

3	TIP CONTACT	3	PHOSPHOR BRONZE	CuSn
2	BREAK CONTACT	3	BRASS	CuSn
1	HOUSING	1	ABS	BLACK
NO.	DESCRIPTION	QTY	MATERIAL	PLATING & COLOR

DIMENSION IN mm	
GENERAL TOLERANCES (UNLESS SPECIFIED)	
.X ±0.38	.X' ±3.0'
.XX ±0.20	.X' ±2.0'
.XXX ±0.10	.XX' ±1.5'
CUSTOMER	

APR.	Vegas 2014-08-01	TITLE.	6.35mm Phone Jack - Half Thread		
CHK.	ZSC 2014-08-01	PART NO.	H363646000	DWG NO.	0E1272
DRA.	CJQ 2014-08-01		SIZE.	A4	SHEET 1/1
			SCALE.	2:1	REV.

