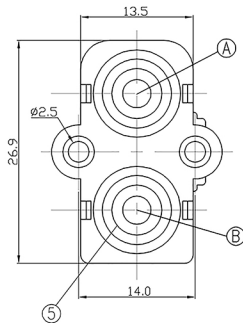
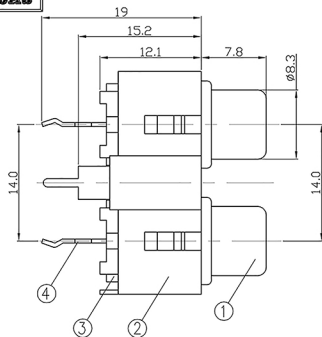
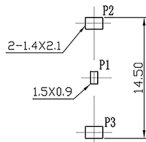


RoHS

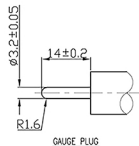


NOTES:

- Current rating: 1A
- Voltage rating: 30V DC
- Withstand voltage: 500V AC/minute
- Contact resistance: 30mΩ Max
- Insulation resistance: 100MΩ Min
- Mating Force: 30N MAX
- Unmating Force: 5-30N
- Durability: 1000 CYCLES
- Working temperature: -25°C ~ +85°C



RECOMMENDED PCB LAYOUT T=1.6mm
TOP VIEW TOLERANCE: ±0.05



GUAGE PLUG



CIRCUIT DIAGRAM

TABLE	COLOR LAYOUT		OUTER CONDUCTOR PLATING	PART NUMBER
	A	B		
	WHITE	RED	CuSn	JK0201140N
	WHITE	RED	Au	JK0201140G

NO.	NAME	MATERIAL SPECIFICATION	PLATING & COLOR	Q'TY
5	WASHER	PBT	SEE TABLE	2 PCS
4	CONTACT NEEDLE	BRASS	CuSn	2 PCS
3	INSIDE HOUSING	ABS	WHITE	1 PCS
2	HOUSING	ABS	BLACK	1 PCS
1	OUTER CONDUCTOR	BRASS	SEE TABLE	1 PCS

GENERAL TOLERANCES (UNLESS SPECIFIED)		ANGLE PROJECTION	SIZE
DIMENSIONS			A4
ANGLE(DEG)			
X.=±0.50	X.=±5°		
X.X=±0.30	X.X=±3°		
X.XX=±0.20	X.XX=±2°	DRAWN BY	Liusuqiong 2017/05/19
X.XXX=±0.10	X.XXX=±1°	CHECKED BY	Robinhe 2017/05/19
		APPROVED BY	Robinhe 2017/05/19

ITEM		SCALE		UNIT	
AV PIN JACK 2Pole V/A DIP TYPE		1:1	mm		
PART NO JK020114 SERIES		SHEET 1 OF 1		TYPE	
DRAWING NO C17xxx					



ITEM

AV PIN JACK 2Pole V/A DIP TYPE

PART NO

JK020114 SERIES

SCALE

1:1

UNIT

mm

DRAWING NO

C17xxx

SHEET

1 OF 1

TYPE

Ⓢ