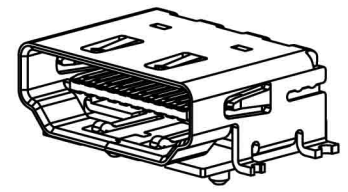
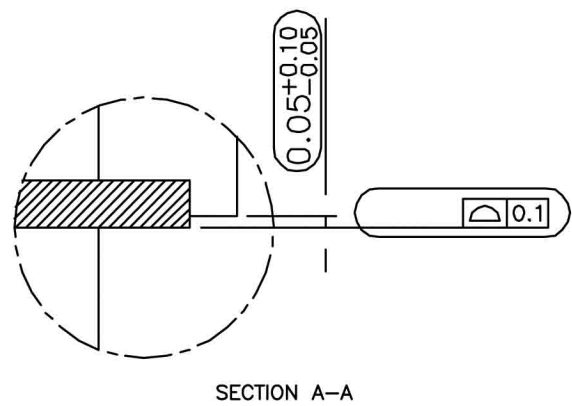
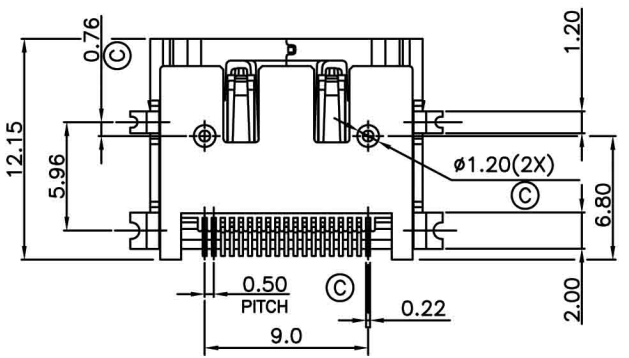
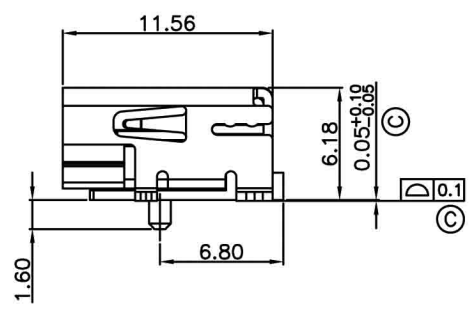
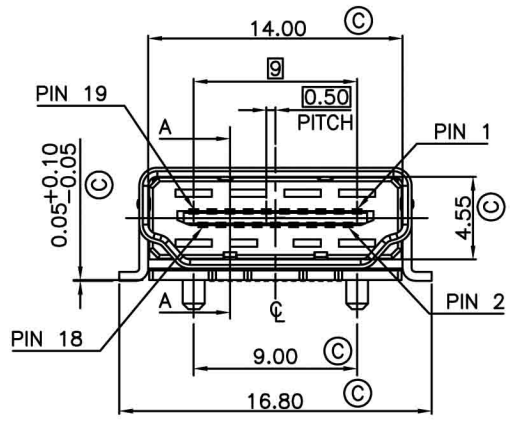


RECOMMENDED PCB LAYOUT (THICKNESS=1.6±0.15mm)



- Material and Finish:
1. Insulator Material: L.C.P.+30% Glass Filled, UL94V-0, Color: Black
 2. Contact Material: Brass(C2680-EH), t=0.2mm
 3. Shell Material: Brass(C2680 1/2H), t=0.5mm
 4. Contact Area Plated: 15u" Gold For One Side Plated Over 50u" Nickel
 5. Solder Area Plated: 100u" Tin Plated For Double Sides Over 50u" Nickel
 6. Shell Plated: 100u" Nickel Plated
 7. Current Rating: 0.5 Amp Min.
 8. Insulation Resistance: Unmated: 100 Mohms Min. Mated: 10 Mohms Min.
 9. Contact Resistance: 10 mohms Max.
 10. Dielectric Withstanding Voltage: 300V AC
 11. Operation Temperature: -55°C to +85°C
 12. Control Dimensions Indicated From (C)

UNLESS OTHERWISE SPECIFIED TOLERANCE	
ANG.	±5°
0.	±
.0	±0.25
.00	±0.20



SCALE: AS SHOWN	UNIT: mm
DRAWN Willis	2007/1/10
CHECKED	/ /
APPROVED	/ /

DRAWN NAME:	HDMI Connector
W/Peg. Solder Tail: SMT Type. Shell: SMT Type.	
PRODUCT NO.	HDMI-A-SABN
FILE NAME:	

REV.	DESCRIPTION	DATE	SIZE	REV.
			A4	