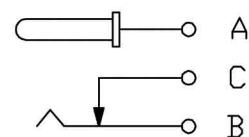
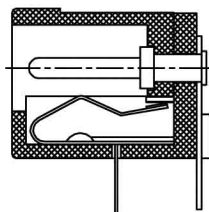


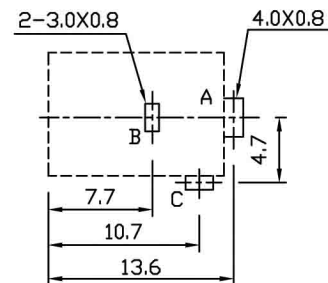
# CENTER PIN DIAMETER

Ø1.5mm / Ø2.0mm / Ø2.5mm

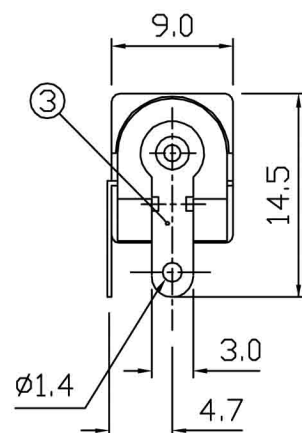
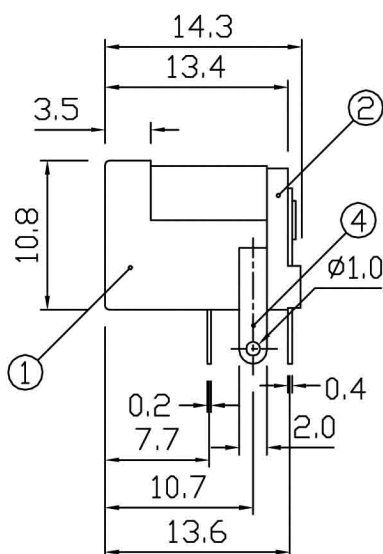
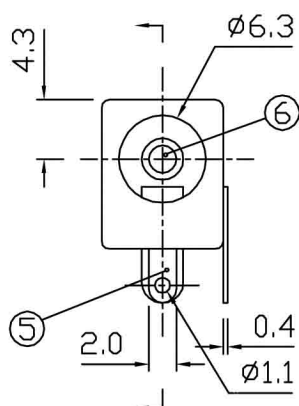
RoHS  
Compliance




SCHEMATIC



P.C.B LAYOUT



6	CENTER PIN	COPPER ALLOY	1	NI PLATED
5	SPRING PLATE	S U S	1	Ag PLATED
4	CONTACT PLATE	BRASS	1	Ag PLATED
3	FIXED PLATE	BRASS	1	Ag PLATED
2	TERMINAL BASE	P B T	1	
1	FRAME	P B T	1	
NO	PART	MATERIAL	QTY	REMARKS

ISSUED	SPECIFICATION	TITLE: DC POWER JACK				
	RATING: DC 30V 0.3A	MODEL NO: SCD-014				
	CONTACT RESISTANCE: 50mΩ MAX	UNIT: MM	DWN	白竟成		
	INSULATION RESISTANCE: 100MΩ AT 500V DC					
	WITHSTAND VOLTAGE: AC 500V for 1 minute	SCALE: 2:1	CHK'D	汪志勇		
	OPERATION FORCE: REFER ATTACH SPECIFICATION					
	SWITCHING LIFE: 5K cycles min	TOLERANCE: ±0.2	APPD.	万运和		
BY: 万运和	<div></div>				DRWG NO:	
DATE: 21-OCT-2006					VERSION: 3.0	

**VIMEX**  
INTERNATIONAL CORPORATION