

1

2

3

4

5

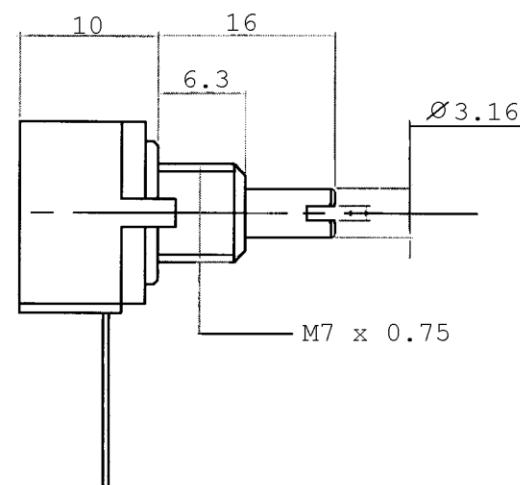
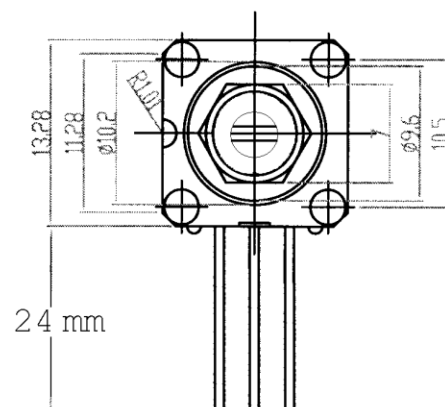
6


Electrical Characteristics

Range of Resistance Values: 1K ohm to 100K ohm
 Tolerance: $\pm 10\%$
 Tapers: Linear (B), Logarithmic (A), Anti-logarithmic (C)
 Independent Linearity: $\pm 5\%$
 Electrical Angle of Rotation: $270^\circ \pm 5$
 Contact Resistance Variation: $\pm 1\%$
 Temperature Coefficient: ± 100 ppm
 Power Rating (@ 70°C): 1 Watt (linear taper); 0.5 Watt (log tapers)
 Operating Temperature: $-55^\circ\text{C} \sim +125^\circ\text{C}$

Mechanical Characteristics

Resistance Element: Cermet
 Substrate: Alumina of high Purity
 Wiper Torque: Single Section - 0.2 to 3.0 oz-in.
 Dual or Triple - 0.3 to 4.5 oz-in.
 Mechanical Angle of Rotation: $295^\circ \pm 5$
 Rotational Life: 100,000 cycles
 Maximum Torque at End Stops: > 40 N-cm (56.644 oz-in)



DESIGNED_BY RICHARD 08/09/04		CHECKED_BY	APPROVED_BY_DATE AIGGIE 08/09/04	FILENAME XXX	DATE 08/09/04	SCALE 1:2
				CE13ST-E series		
				Potentiometer	EDITION 0	SHEET 1/1